



MyOwn Telco
Bridging The Gap!

Here is Kaly, Your personal Telecommunication assistant

A Web 3.0 initiative brought to you by [MyOwn Telco](#)



Kaly is your day to day personal assistant that provides you with direct interactions to the MyOwn Telco telecommunication platform. **Kaly** will respond to interactive chat queries and help you making calls using your contact names, do call-backs, show you who is calling, provide you with your account balance and much more...she even can tell you the current temperature!

<< (09:57:59) **Kaly**: Incoming call from Mary

....

(10:08:24) **John**: call Pizzahut from Office >>

On the technical side, you are now able to use any Jabber (XMPP) compliant client chat software to interact with the MyOwn Telco telecommunication platform; once you have it installed, simply add **Kaly** as one of your contact to start chatting with her, that's it! Interacting with **Kaly** essentially involves the following steps which we will all be covering in details within this document:

- ✓ Pidgin chat software installation and connection to the MyOwn Telco XMPP server
- ✓ Adding **Kaly** as one of your contact (kaly@kaly.im)
- ✓ Interacting with **Kaly**! (see last page for examples)




Please note that **Kaly** is offered free of charge to all MyOwn Telco customers. If you have any questions about **Kaly** or any other MyOwn Telco services, please contact our support department: support@myowntelco.net



Also, for the purpose of this document we will be installing *Pidgin* but please note that it is not mandatory to use this software; you can actually use any other XMPP compatible client application. As a reference here is a Wikipedia summary of the different XMPP chat client software that exists:

http://en.wikipedia.org/wiki/Comparison_of_instant_messaging_clients#XMPP-related_features

For the benefice of our customers our team has successfully tested the following:

	Xabber https://play.google.com/store/apps/details?id=com.xabber.android&hl=en
	Monal https://itunes.apple.com/us/app/monal/id317711500?mt=8
	Pidgin http://www.pidgin.im/

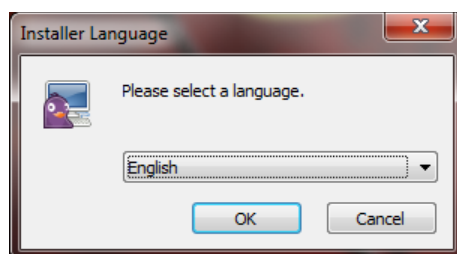


Here is Kaly, Your personal Telecommunication assistant

A Web 3.0 initiative brought to you by MyOwn Telco

First step: Installing Pidgin

- 1) Download and execute the **Pidgin** offline installation archive from the following link:
<http://sourceforge.net/projects/pidgin/files/Pidgin/2.10.7/pidgin-2.10.7-offline.exe/download>
- 2) Select the installation language of your choice:



- 3) Click **Next** to start the setup wizard:

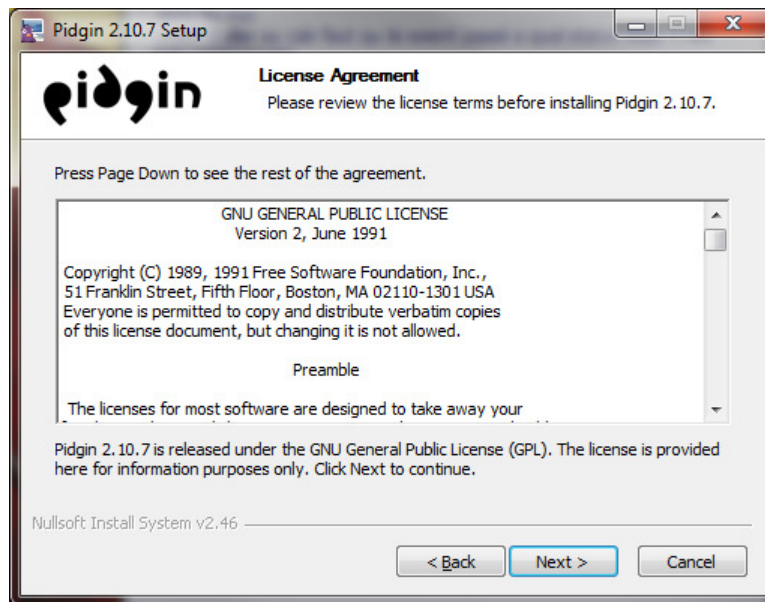




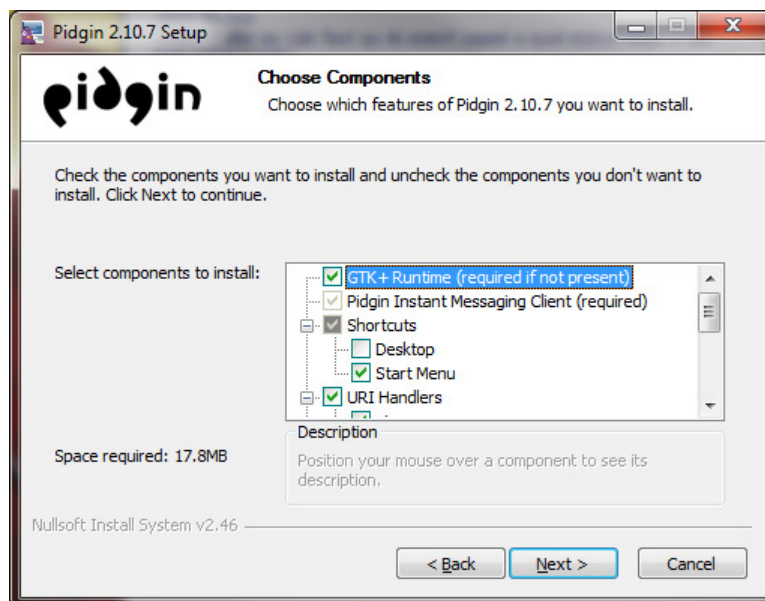
Here is Kaly, Your personal Telecommunication assistant

A Web 3.0 initiative brought to you by [MyOwn Telco](http://www.myowntelco.net)

- 4) Read the License Agreement and click **Next** to continue:



- 5) Choose the components you want to install, or leave the default values and click **Next**:

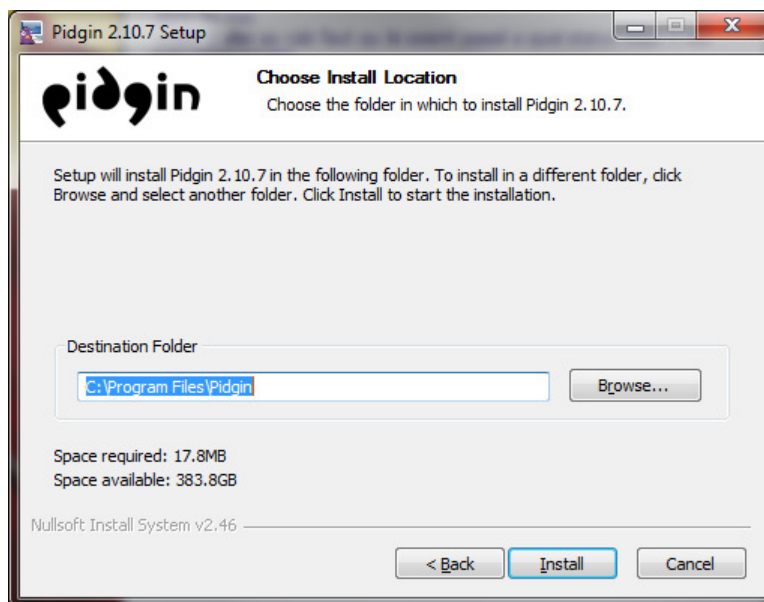




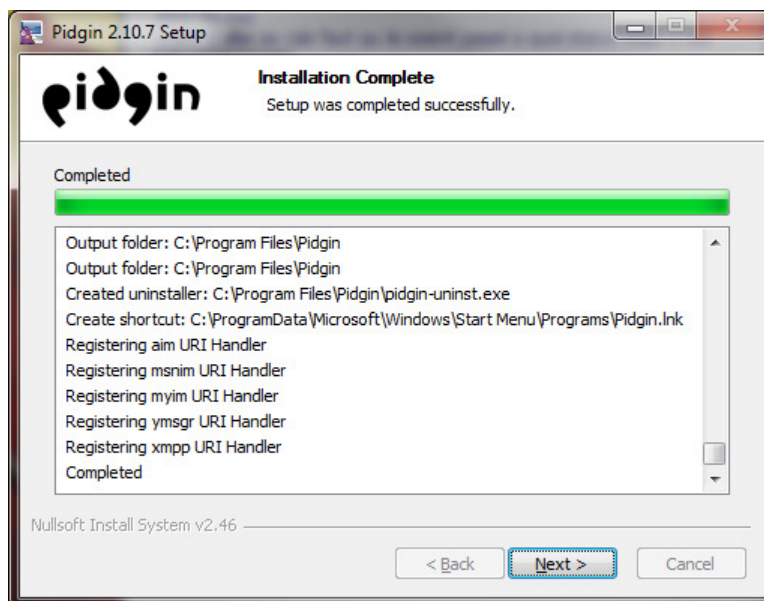
Here is Kaly, Your personal Telecommunication assistant

A Web 3.0 initiative brought to you by [MyOwn Telco](http://www.myowntelco.net)

- 6) Choose the installation folder and click **Next**:



- 7) The installation will now be performed, when completed click **Next**:





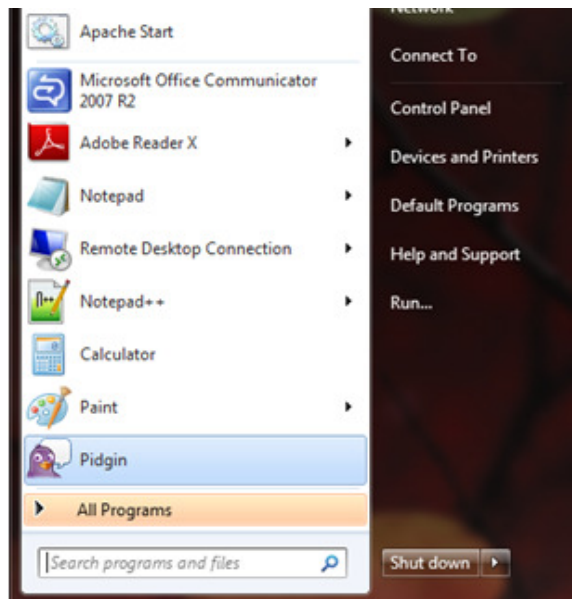
Here is Kaly, Your personal Telecommunication assistant

A Web 3.0 initiative brought to you by [MyOwn Telco](#)

- 8) The setup wizard is now done, just click the **Finish** button to dismiss the window:



- 9) Now start the application by clicking the **Pidgin** icon from the Windows Start menu:

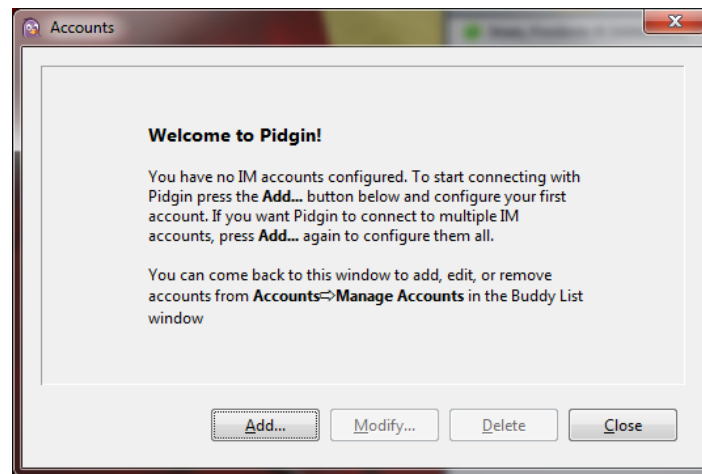




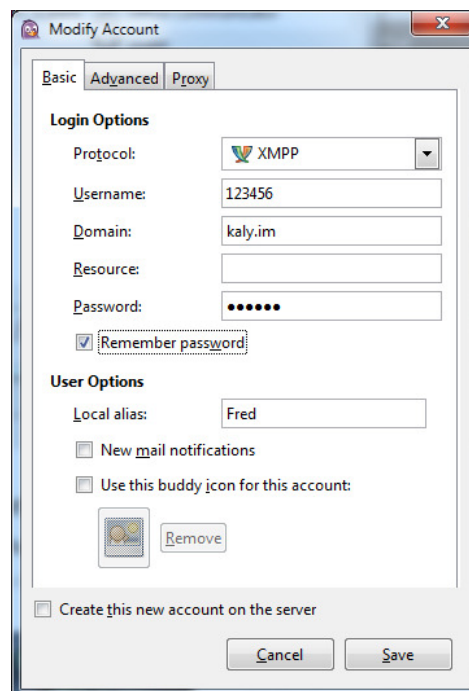
Here is Kaly, Your personal Telecommunication assistant

A Web 3.0 initiative brought to you by [MyOwn Telco](#)

- 10) Upon first execution, a *Welcome* window will be showed; click the **Add** button to proceed with your account configuration:



- 11) On the **Add Account** window, select the **XMPP** protocol, type in your MyOwn Telco account credentials (6 digits username and password), put the *Domain* name and select the *Remember password* option. When finished, click the **Advanced** tab:

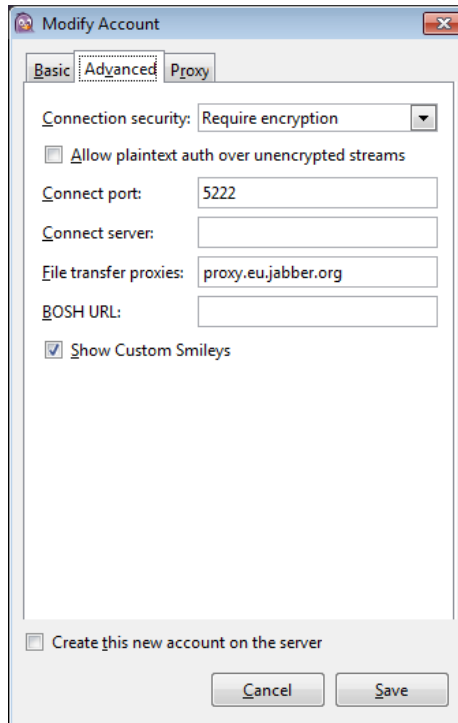




Here is Kaly, Your personal Telecommunication assistant

A Web 3.0 initiative brought to you by [MyOwn Telco](http://www.myowntelco.net)

- 12) On the **Advanced tab**, verify that the *Connection security* setting is set to *Require encryption* then click on the **Save** button to close the window:





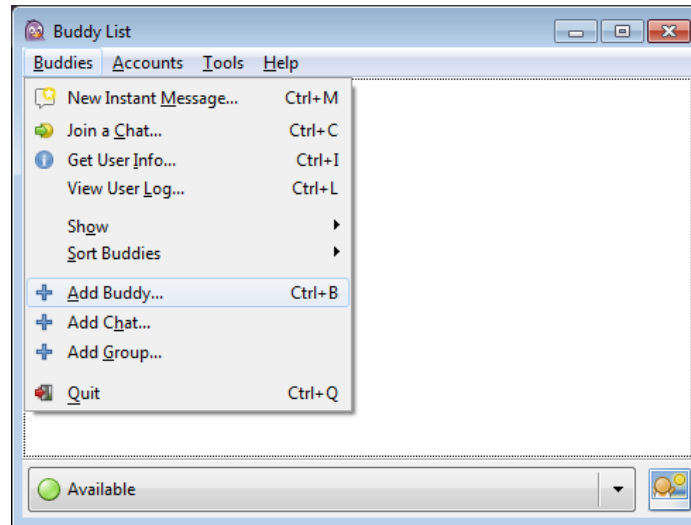
Here is Kaly, Your personal Telecommunication assistant

A Web 3.0 initiative brought to you by [MyOwn Telco](#)

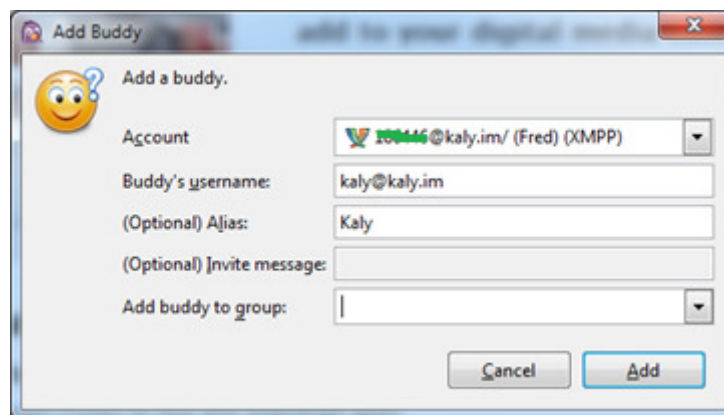
Second step: Adding Kaly as one of your contact

As your account credentials were accepted by the system and your status now shows **Available**, you are Ok to proceed with the following steps;

- 1) Back to the Buddy List window, if **Kaly** is not added automatically, click the **Add Buddy...** menu item from the **Buddies** drop down menu:



- 2) Within the subsequent **Add Buddy** window, specify kaly@kaly.im as the contact to add and finally click the **Add** button:

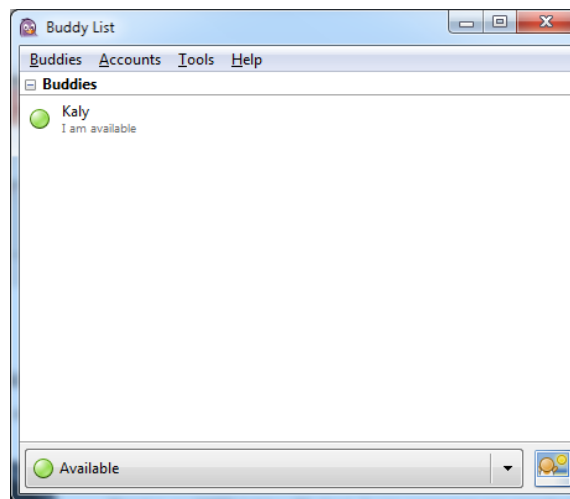




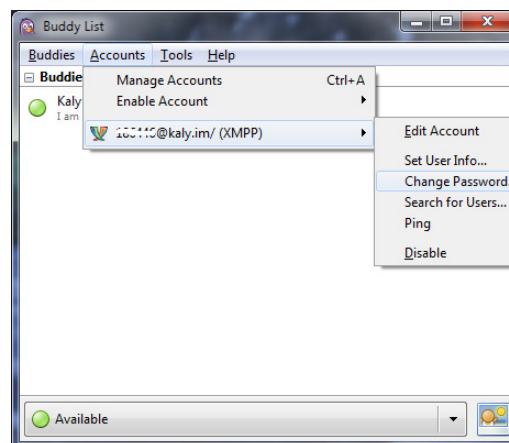
Here is Kaly, Your personal Telecommunication assistant

A Web 3.0 initiative brought to you by [MyOwn Telco](#)

- 3) Your **Buddy list** window should now shows **Kaly** as one of your contact, you may also there right click on the contact and put in an **Alias** to make it friendlier:



- 4) We also recommend that you change your password, once you are logged in, this to keep it different from your MyOwn Telco phone system password:





Here is Kaly, Your personal Telecommunication assistant

A Web 3.0 initiative brought to you by [MyOwn Telco](#)

Third step: Here you go, Chat!

Rather than providing you with all commands that **Kaly** understands, we put a conversation sample on the following page. You may also type **Help** at any time to get information.

IMPORTANT: Please remember that for security purposes, you are required to provide your MyOwn Telco 6 digits password, using the ***magic word is <password>*** directive, this every time you want to start chatting. You are also required to tell **Bye** when you leave the chat session, this to make sure that you are disconnected and do not leave a pending chat session opened.



Here is Kaly, Your personal Telecommunication assistant

A Web 3.0 initiative brought to you by MyOwn Telco



In green are some comments:

(09:50:22) **John:** Hello

(09:50:22) **Kaly:** What is the magic word?

(09:51:02) **John:** magic word is 345678

(This is your MyOwn Telco's account 6 digits password)

(09:51:02) **Kaly:** Hello John! And please don't forget to tell me 'bye' when you leave!

(09:51:22) **John:** Show my numbers

(09:51:23) **Kaly:** Your numbers are 5143121212 / 552125456500

(09:51:42) **John:** who called me

(09:51:42) **Kaly:** Last call was from Mary at 8h15

(‘Mary’ was actually found within John’s contact list; otherwise the number would have been showed)

(09:51:57) **John:** what is the temperature

(09:51:58) **Kaly:** Current temperature is 18 C / 83% humidity / 19 km/h winds

(This answer is based on your account’s postal code)

(09:52:08) **John:** how are you

(09:52:08) **Kaly:** Now that you are asking, I am fine John! yourself?

(09:52:21) **John:** show my balance

(09:52:21) **Kaly:** Your balance is only \$1.58. You may want to replenish it now:

<http://www.myownaccount.net>

(09:52:33) **John:** what time is it

(09:52:34) **Kaly:** It's now 9h52

(09:52:57) **John:** call Mary

(09:52:57) **Kaly:** Dialing...

(‘Mary’ is within the contact list; Kaly will then call your IP phone and then conference you with Mary)

(09:55:24) **John:** call Pizzahut from Office

(09:55:50) **Kaly:** Sorry, but I couldn't find 'Pizzahut' within your contacts...

(09:56:50) **John:** call 15143101010 from Office

(09:56:51) **Kaly:** Dialing...

(Will call the number and conference the ‘Office’ phone found within the contacts)

(09:57:59) **Kaly:** Incoming call from Mary

(A notification that Mary is calling you)

(09:58:35) **John:** bye

(09:58:35) **Kaly:** Bye, bye John!

(Essential, for security purposes)